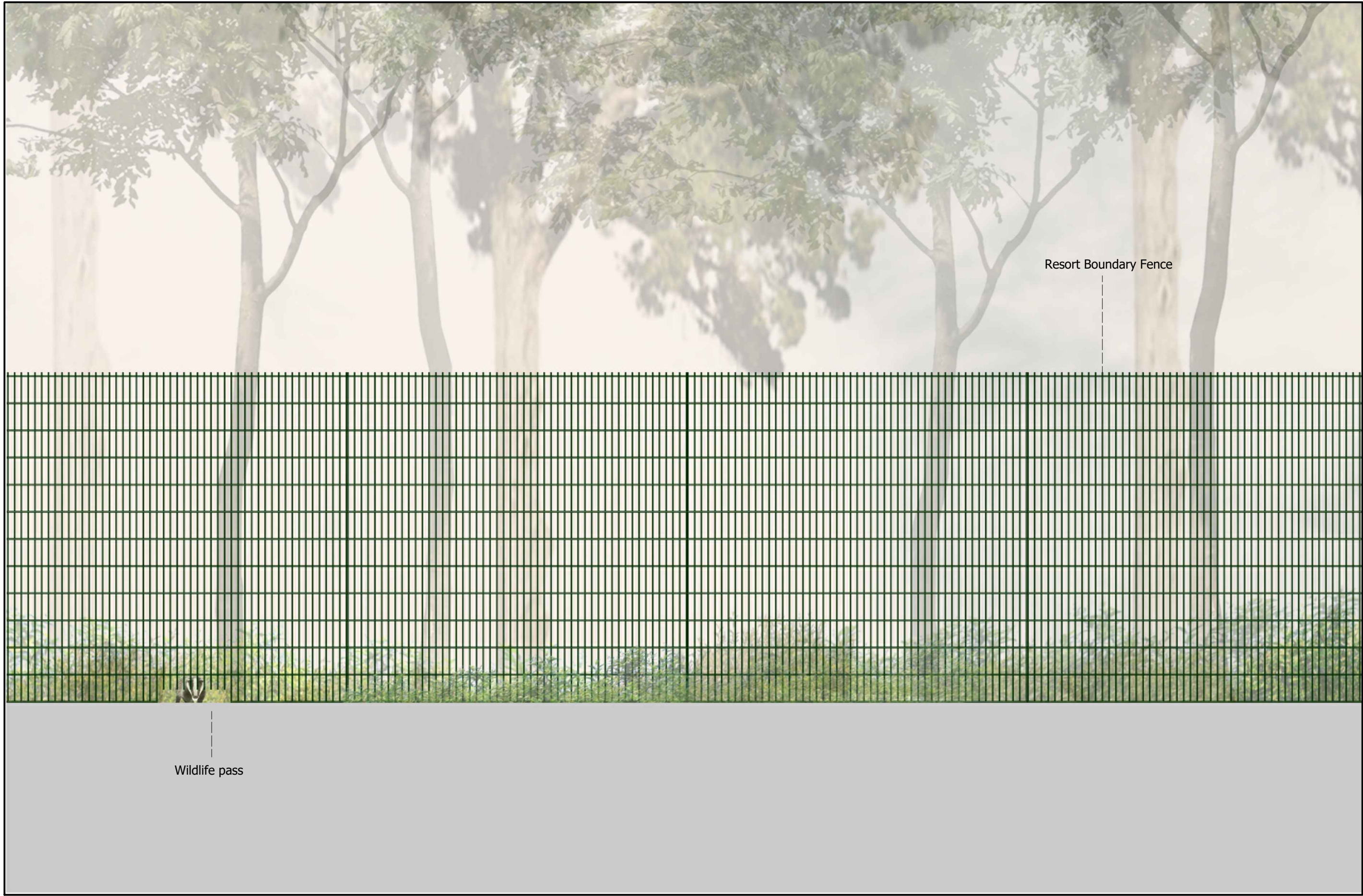




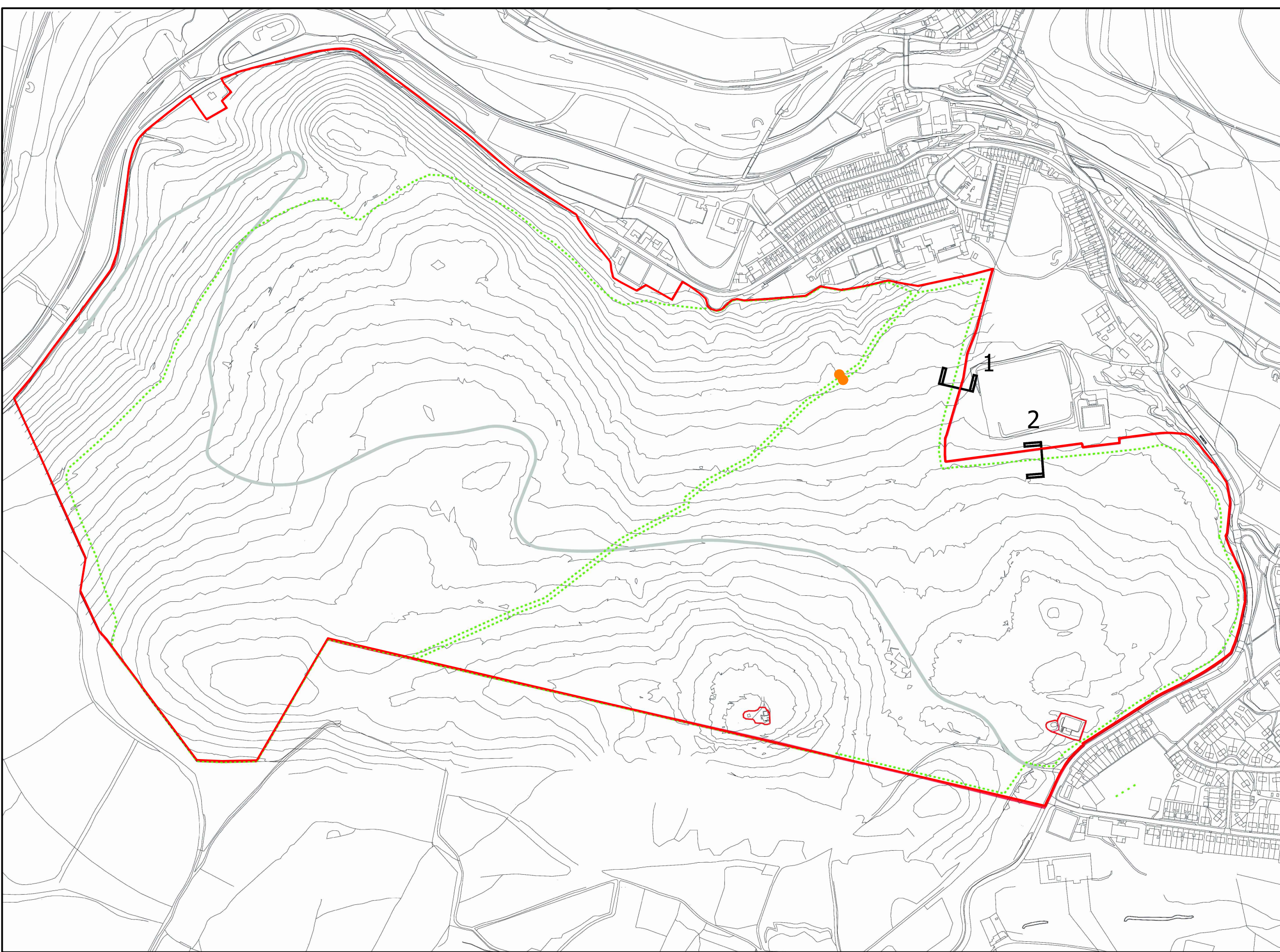
1
L-06 SECTION 1



2
L-06 SECTION 2



3
L-06 FENCE ELEVATION



5
L-05 RESORT BOUNDARY LOCATION



6
L-06 FENCE IMAGE (not reflecting colour choice)

The scaling of this drawing cannot be assured

Revision B Updates to align with Parameter Plan 24.08.22

Date 24.08.22

Drm SC

Ckd JH

LEGEND

Site Boundary

Resort Boundary

Spine Road

Section Lines

Fob Access Gates - Wildfox Visitor Only

RESORT BOUNDARY DETAILS:

- Height: Minimum 2.1metres
- Mesh: Comprising 50mm x 200mm open mesh pattern with dual 8mm horizontal wires at 200mm centres and single 6mm vertical wires at 50mm centres
- Posts: Various RHS posts sizes dependent on height (see chart below for details), spaced at 2525mm centres.
- Post to panel fixing: Panels fixed to posts with full height 40mm x 5mm clamp bar with bolt fixings at 400mm centres. The full height clamp bars create a flush safe finish with the mesh ends behind the clamp bar. No projections to top of fence.
- Gates: To match - location to be confirmed.
- Finish: Materials are galvanised and Polyester Powder coated
- Colour: Dark grey - RAL Colour to be confirmed.
- Additional Items: Wildlife passes at base of fence. Size and amount to be confirmed with ecologist.
- Gates: To match fence - location as shown on plan with fob access for Wildfox Visitors

PLANNING

Project
Wildfox Resort
Afan Valley

Drawing Title
Condition 11 and Landscape RMA
Resort Boundary Proposals

Date 12.07.22
Project No 33988

Scale
NTS @A1
NTS @A3
Drawing No RG - L - 06

Drawn by PK
Check by SC
Revision B

BARTON
WILLMORE now **Stantec**

Town Planning • Master Planning & Urban Design • Architecture •
Landscape Planning & Design • Infrastructure & Environmental Planning •
Heritage • Graphic Communication •
Communications & Engagement • Development Economics

bartonwillmore.co.uk

Offices at Birmingham Bristol Cambridge Cardiff Edinburgh Glasgow Leeds London Manchester Newcastle Reading Southampton