

the

FOX

CADNO in Welsh

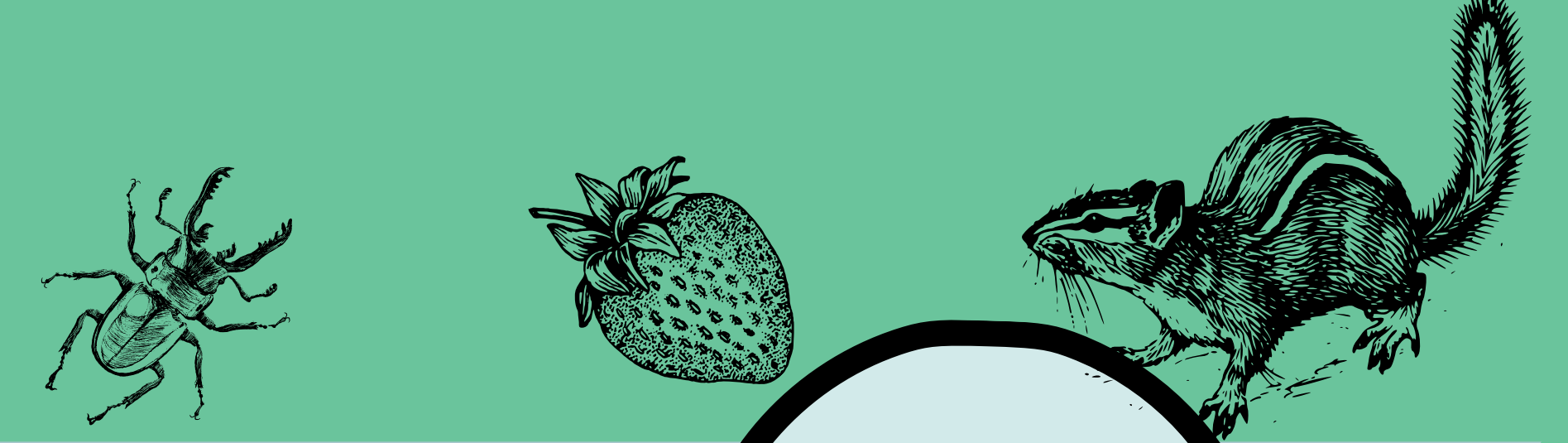
FACTS ABOUT ME

I AM CREPSCULAR, WHICH MEANS I AM MOSTLY ACTIVE AROUND DAWN OR DUSK, I LIVE IN THE COUNTRYSIDE (IN WOODLAND, FARMLAND AND THE UPLANDS), AS WELL AS IN URBAN AREAS

I HAVE REALLY GOOD HEARING RANGE AND CAN HEAR SOMETHING FROM UP TO 30M AWAY

MY FAVOURITE FOOD

I AM AN OMNIVORE, I EAT MEAT AND PLANTS AS WELL AS BERRIES AND FOOD DISCHARGED BY HUMANS!



THE FEMALES, CALLED VIXEN, CAN BE RECOGNISED BY THEIR SPINE-CHILLING SHRIEK DURING MATING SEASON

I LOVE TO SUNBATHE



ME
IN
THE
WILD



LIKES

I AM MAINLY ACTIVE IN THE NIGHTS BETWEEN DUSK AND DAWN

DISLIKES

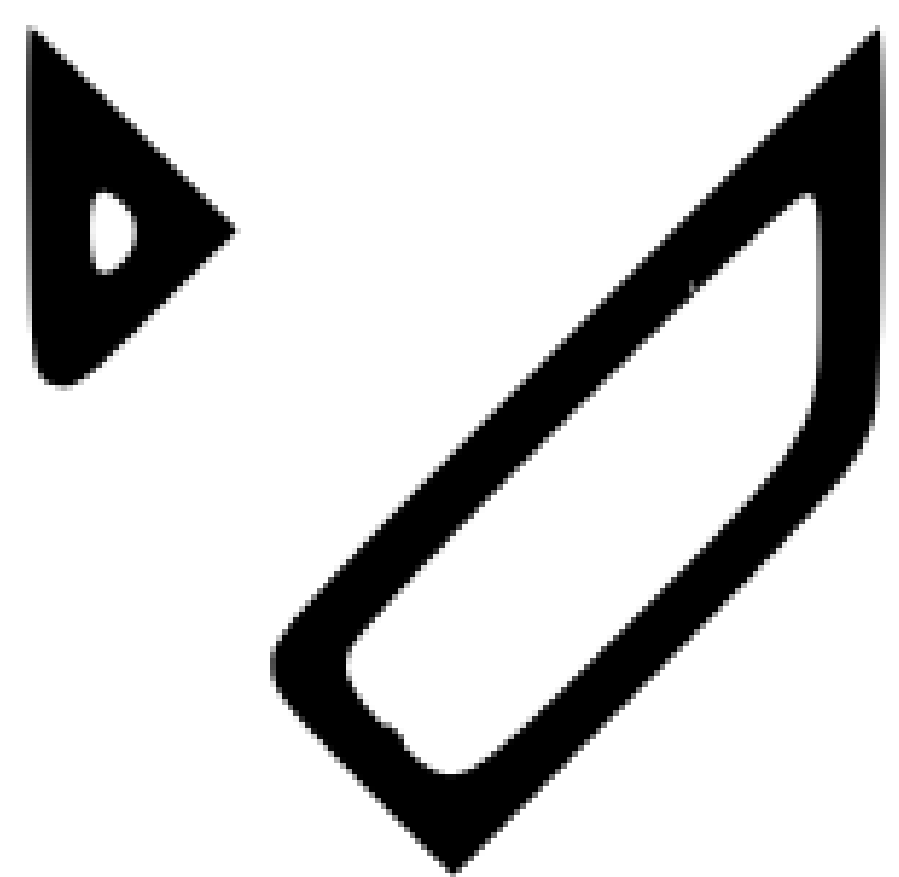
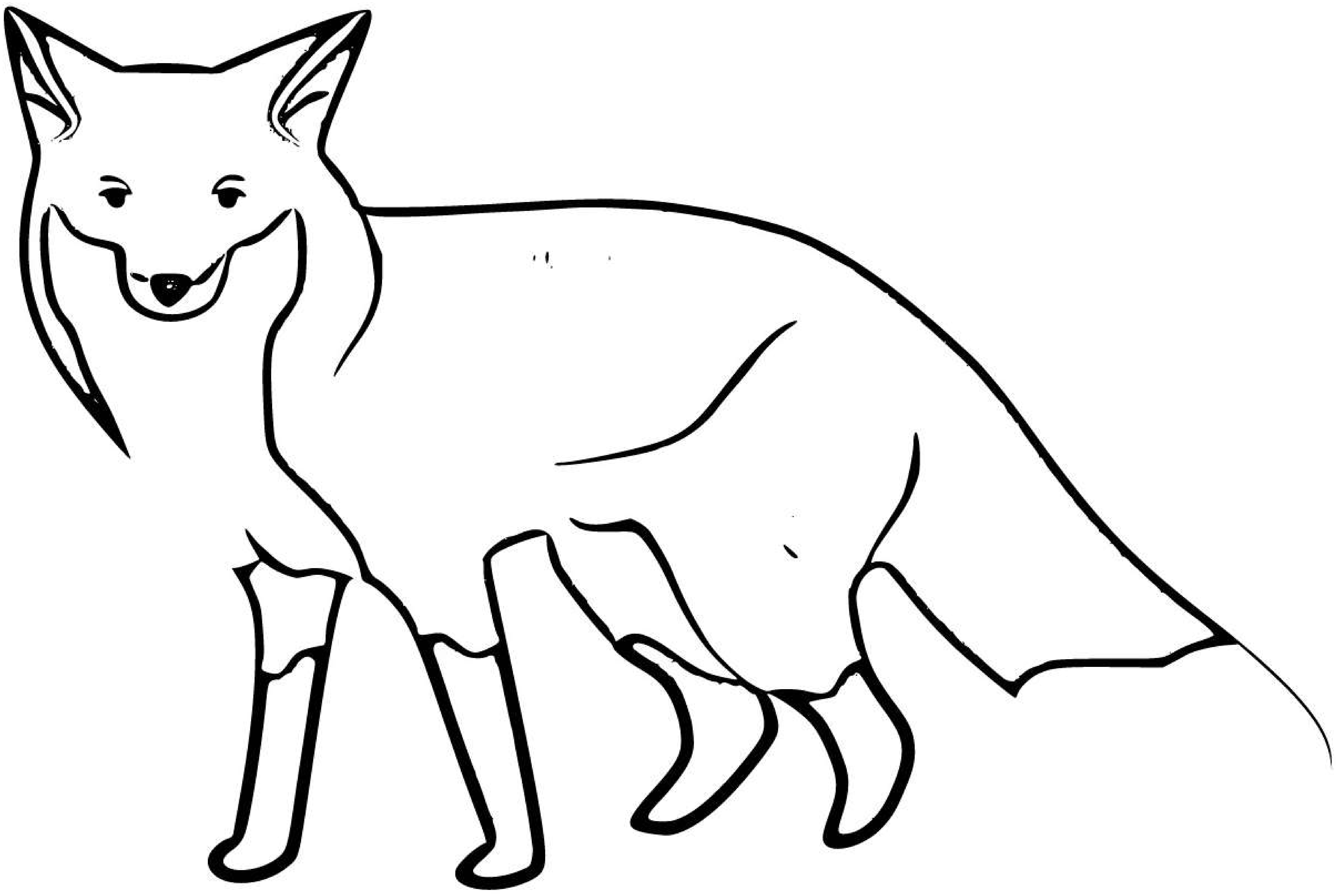
I DON'T LIKE GETTING WET OR LOUD NOISES



_____ the

FOX

CADNO in Welsh



the

FIELD/WOOD MOUSE

FACTS ABOUT ME

I HAVE A LONG TAIL WITH BROWN FUR AND A WHITE TO GREY BELLY

LLYGODEN Y MAES in Welsh

I HAVE LARGE BACK FEET THAT GIVE ME A GOOD SPRING WHEN I JUMP

MY FAVOURITE FOOD I AM AN OMNIVORE SEEDS, SNAILS, INSECTS, EARTHWORMS, FRUIT BERRIES, NUTS AND FUNGI



ME IN THE WILD

I THRIVE IN WOODLAND, HEDGEROWS, FARMLAND, GRASSLAND AND GARDENS

I RARELY LIVE LONGER THAN 1 YEAR



I AM A GOOD CLIMBER

LIKES

I LIKE TO STORE BERRIES AND SEEDS IN THE AUTUMN

DISLIKES

I DISLIKE BIRDS THAT PREY ON US, INCLUDING HAWKS, OWLS AND LARGER MAMMALS INCLUDING STOATS AND WEASALS

the
FIELD/WOOD
MOUSE

LLYGODEN Y MAES in Welsh

